

# For Lease ~ Office/Retail Space

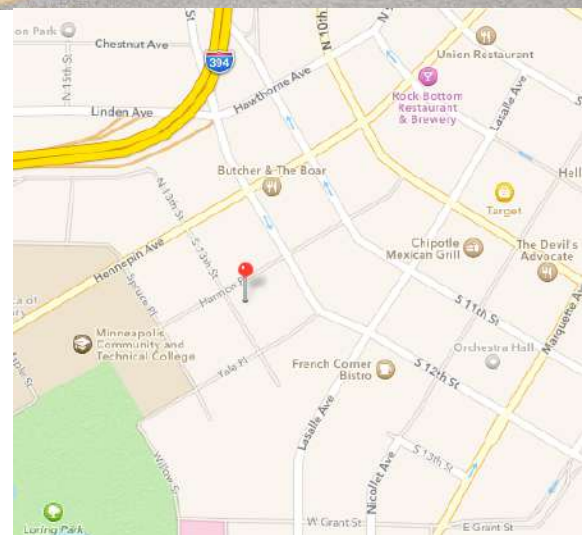
## The Lady Slipper Building

1221 Harmon Place, Minneapolis, MN 55407



### Facts

1221-1229 Harmon Place is located in the Harmon Place Historic District in downtown Minneapolis. It is one of several buildings in the district related to the automobile sales industry in the area from the 1920s through the 1950s. Original 1915 construction drawings refer to it as "Store Building for Hattie L. Knoblauch." Carved, limestone medallions at the storefront corners have a lady-slipper and the letter "K" intertwined, probably a reference to the original owner.



Ryan Hoveland  
Office: 612-361-4806  
Mobile: 612-802-0988  
[ryan@apexcommercialproperties.com](mailto:ryan@apexcommercialproperties.com)

Apex Commercial Properties, LLC  
155 S. Wabasha Street, #115  
St. Paul, MN 55107

# For Lease ~ Office/Retail Space

## The Lady Slipper Building

1221 Harmon Place, Minneapolis, MN 55407



### Property Details

#### **Building Size**

24,410sf

#### **Available Suites**

Suite #1221 - 5,205sf

#### **Original Construction**

1915

#### **Remodel Year**

2005

#### **Construction Type**

Brick & Glass

#### **Parking**

77 Stalls at \$139 per month

#### **Rental Rates**

\$10.00 NNN per square foot

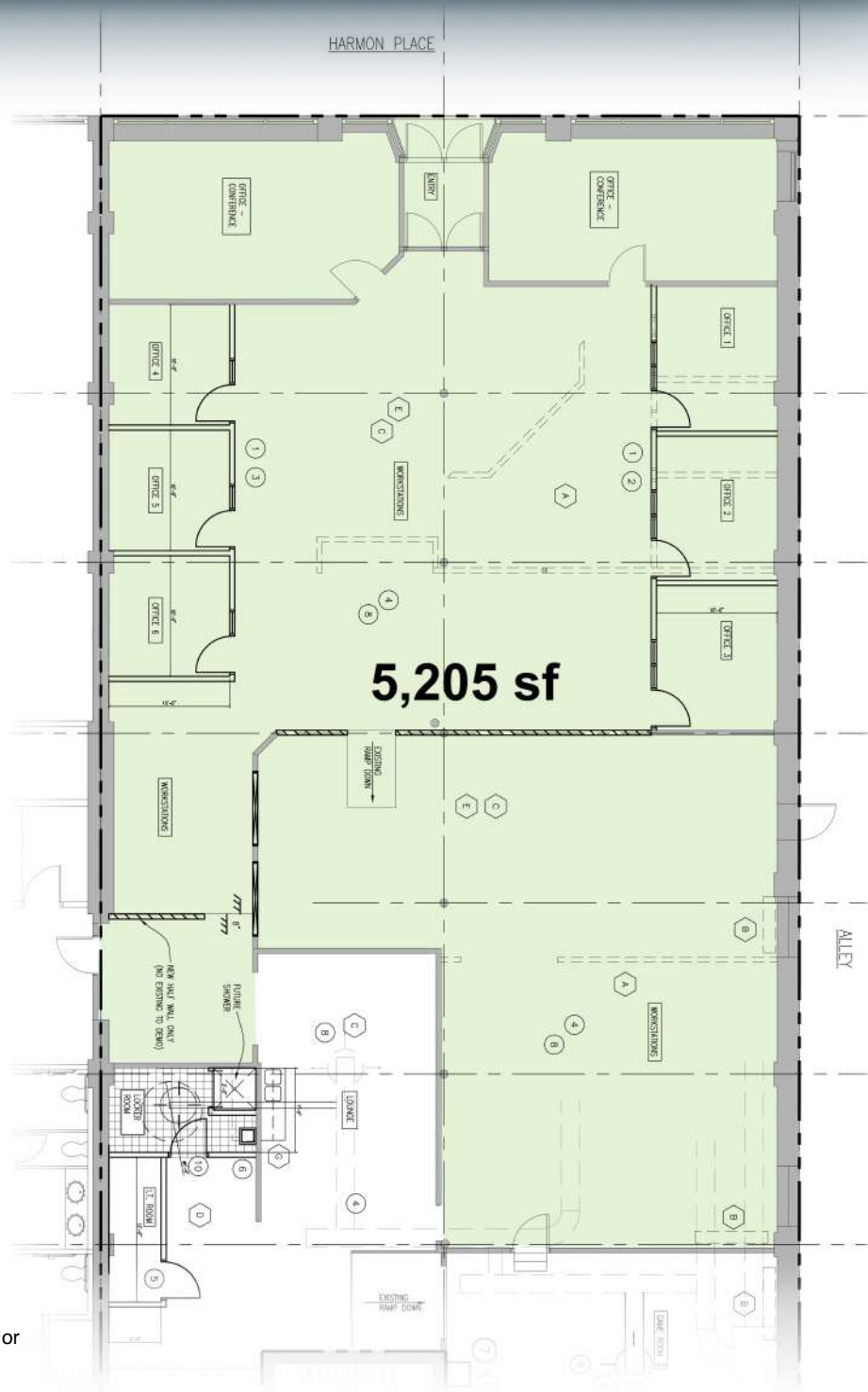
#### **CAM & Tax Estimate**

\$8.31 per square foot

#### **Notes**

Lower level storage space available

Information is from sources deemed reliable. However, no warranty or representation is made as to its accuracy or completeness.



Ryan Hoveland  
Office: 612-361-4806  
Mobile: 612-802-0988  
[ryan@apexcommercialproperties.com](mailto:ryan@apexcommercialproperties.com)

Apex Commercial Properties, LLC  
155 S. Wabasha Street, #115  
St. Paul, MN 55107

# For Lease ~ Office/Retail Space The Lady Slipper Building

1221 Harmon Place, Minneapolis, MN 55407



Ryan Hoveland  
Office: 612-361-4806  
Mobile: 612-802-0988  
[ryan@apexcommercialproperties.com](mailto:ryan@apexcommercialproperties.com)

Apex Commercial Properties, LLC  
155 S. Wabasha Street, #115  
St. Paul, MN 55107