

Office/Warehouse ~ For Sale

Maple Leaf Ridge Business Center

2475 Maplewood Drive N, #112, Maplewood, MN



Facts

Office/Showroom/Warehouse Condo - 2,360 sf

1,070 sf super clean warehouse with drive-in, floor drain and 18' clear height. 345 sf showroom, 945 sf mezzanine office space with two private offices and kitchenette.

Centrally located in Maplewood with easy access to anywhere in the Twin Cities via Hwy 36, Hwy 61, Hwy 35E and Hwy 694. Close to Menards, Costco, other retail, many restaurants, and Keller Regional Park and golf course.



Diane Signorelli

Office: 612-361-4806

Mobile: 651-399-9728

diane@apexcommercialproperties.com

Apex Commercial Properties, LLC
St. Paul, MN

Office/Warehouse ~ For Sale

Maple Leaf Ridge Business Center

2475 Maplewood Drive N, #112, Maplewood, MN



Property Details

Available Square Feet

2,360 sf

Sale Price

\$390,000.00

2024 Property Taxes

\$9,328

Monthly Association Dues

\$516.23

Zoning

M-1 Light Manufacturing

Parking

Free off-street parking

Comments:

- Highly visible location overlooking Hwy 61
- Building and monument signage
- 18' clear warehouse
- Drive-in access
- Floor drain
- Assumable mortgage at 4.0%

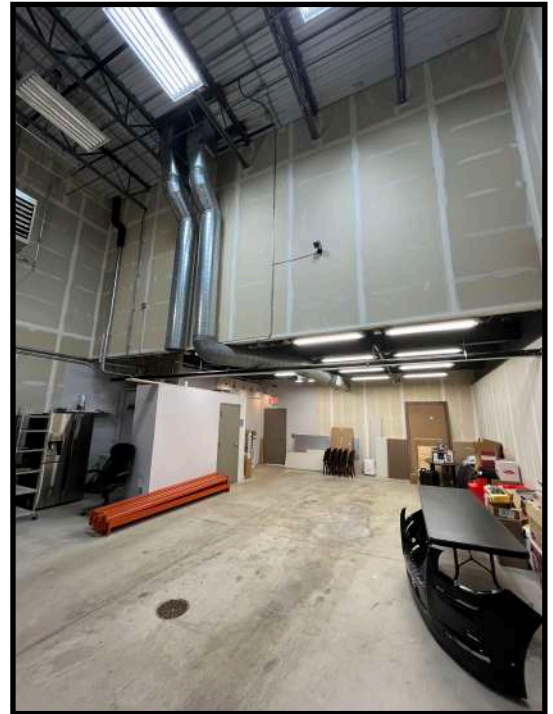
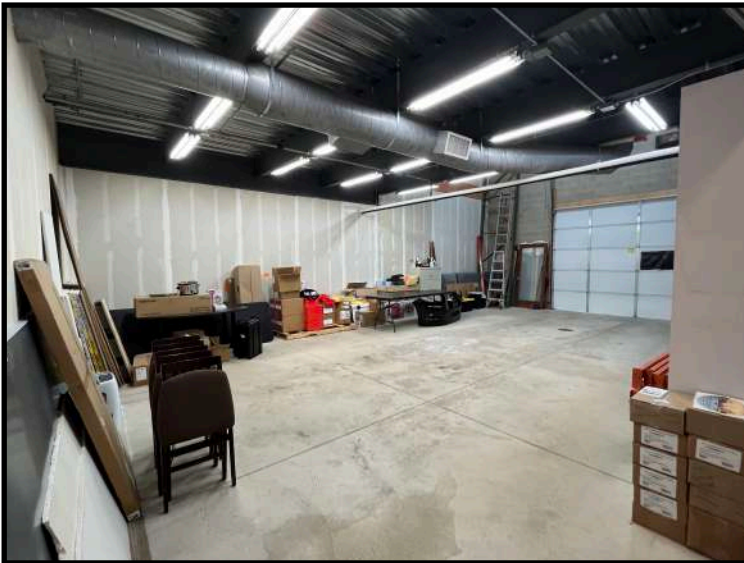
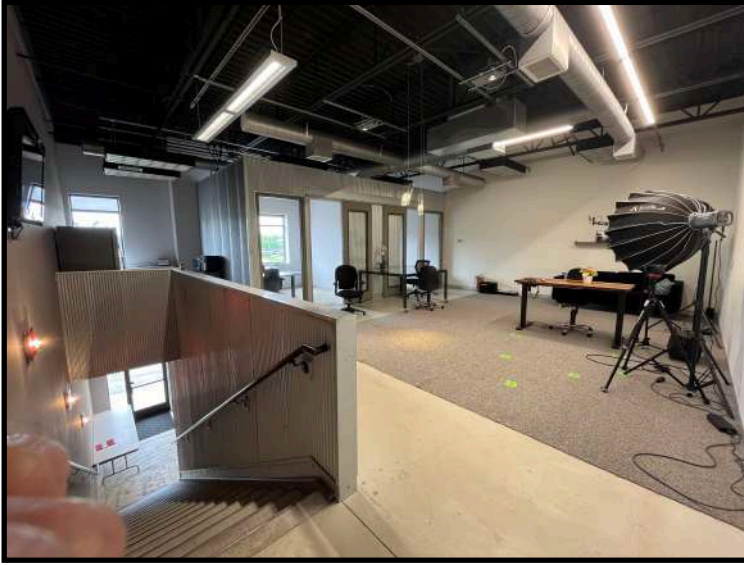


Information is from sources deemed reliable. However, no warranty or representation is made as to its accuracy or completeness.

Diane Signorelli
Office: 612-361-4806
Mobile: 651-399-9728
diane@apexcommercialproperties.com

Apex Commercial Properties, LLC
St. Paul, MN

Photos



All information is from sources judged to be reliable. However, no warranty or representation is made as to its accuracy.

Diane Signorelli
Office: 612-361-4806
Mobile: 651-399-9728
diane@apexcommercialproperties.com

Apex Commercial Properties, LLC
St. Paul, MN