

For Sale ~ Newly Built-Out Office

635 Fairview

635 Fairview Ave N, St. Paul, MN 55104



Facts

The Work it Building is newly built-out, full of natural light, inspiring atmosphere of an open-concept layout with large surrounding windows, fully equipped kitchen w/ oven, new roof and updated HVAC, water connections ready for sprinkler system, new ADA lift for full handicap accessibility, bike rack, fully backlit raised monument signage, and amazing modern office build out in place, making this move in ready!

Outstanding location on the green line with off street parking and tons of restaurants and breweries within a one mile radius. This space has everything a growing, cutting edge business needs to explode into their full potential.



Ryan Hoveland
Office: 612-361-4806
Mobile: 612-802-0988
ryan@apexcommercialproperties.com

Apex Commercial Properties, LLC
St. Paul, MN

For Sale ~ Newly Built-Out Office

635 Fairview

635 Fairview Ave N, St. Paul, MN 55104



Property Details

Building Size

5,600sf

Available Suites

Building

The Midway area of Saint Paul is bounded by Pierce Butler Route on the north, North Lexington Parkway on the east, University Avenue on the south and Cleveland Avenue on the west. The name comes from the fact that the area is almost literally midway between the downtown metros of Minneapolis and Saint Paul.

Year Built

1946

The Midway is also home to St. Paul's warehouse district, and a diverse mix of residential and commercial properties, including Midway Center, one of Saint Paul's shopping areas. A variety of retail stores, grocers and restaurants, operated by owners representing a variety of nationalities, provide a bustling mix of commerce and traffic on any day of the week. The key Midway intersection of University Avenue and Snelling Avenue is one of the busiest in all of the Twin Cities – a far cry from a century and a half ago, when the area was a giant prairie between Minneapolis and Saint Paul.

Construction Type

Brick/Block

Parking

11 Stalls

Asking Price

\$899,000

Taxes 2024

\$19,990.00



Allianz (il) Field



Information is from sources deemed reliable. However, no warranty or representation is made as to its accuracy or completeness.

Ryan Hoveland

Office: 612-361-4806

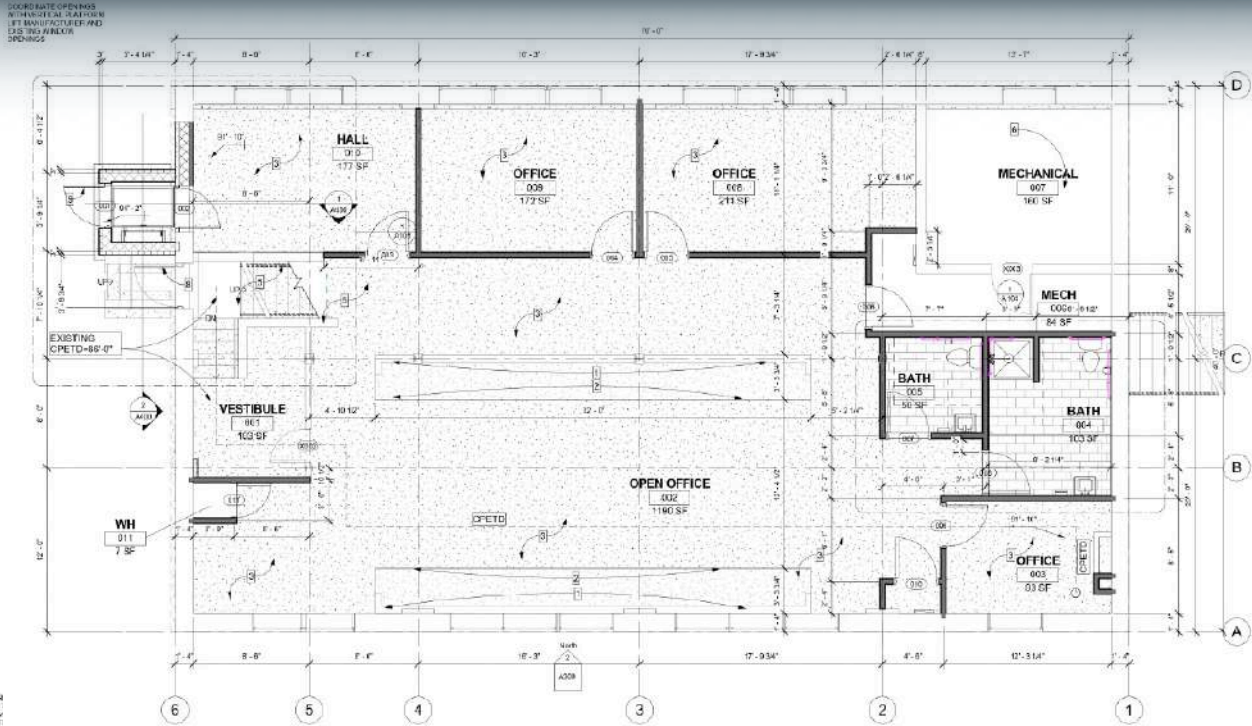
Mobile: 612-802-0988

ryan@apexcommercialproperties.com

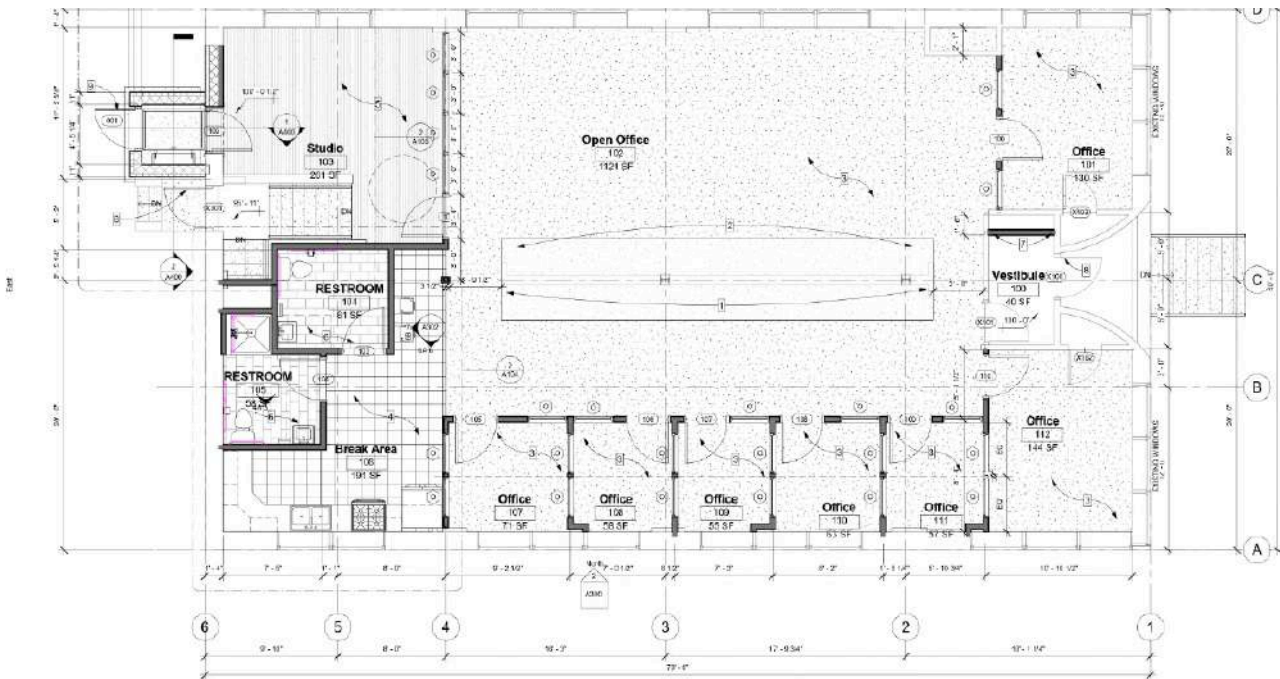
Apex Commercial Properties, LLC
St. Paul, MN

For Lease ~ Newly Built-Out Office 635 Fairview - Work it Building

635 Fairview Ave N, St. Paul, MN 55104



1 Lower Level Revised Plan
1/4" = 1'-0"



1 Main Level Revised Plan
1/4" = 1'-0"

Ryan Hoveland
Office: 612-361-4806
Mobile: 612-802-0988
ryan@apexcommercialproperties.com

Apex Commercial Properties, LLC
St. Paul, MN

For Lease ~ Newly Built-out Office 635 Fairview - Work it Building

635 Fairview Ave N, St. Paul, MN 55104



Ryan Hoveland
Office: 612-361-4806
Mobile: 612-802-0988
ryan@apexcommercialproperties.com

Apex Commercial Properties, LLC
St. Paul, MN

For Sale ~ Newly Built-Out Office

635 Fairview

635 Fairview Ave N, St. Paul, MN 55104



Ryan Hoveland
Office: 612-361-4806
Mobile: 612-802-0988
ryan@apexcommercialproperties.com

Apex Commercial Properties, LLC
St. Paul, MN

For Sale ~ Newly Built-Out Office

635 Fairview

635 Fairview Ave N, St. Paul, MN 55104



Ryan Hoveland
Office: 612-361-4806
Mobile: 612-802-0988
ryan@apexcommercialproperties.com

Apex Commercial Properties, LLC
St. Paul, MN

For Sale ~ Newly Built-Out Office

635 Fairview

635 Fairview Ave N, St. Paul, MN 55104



Ryan Hoveland
Office: 612-361-4806
Mobile: 612-802-0988
ryan@apexcommercialproperties.com

Apex Commercial Properties, LLC
St. Paul, MN