

For Lease ~ Office & Warehouse 273 Lafayette W Frontage Rd.

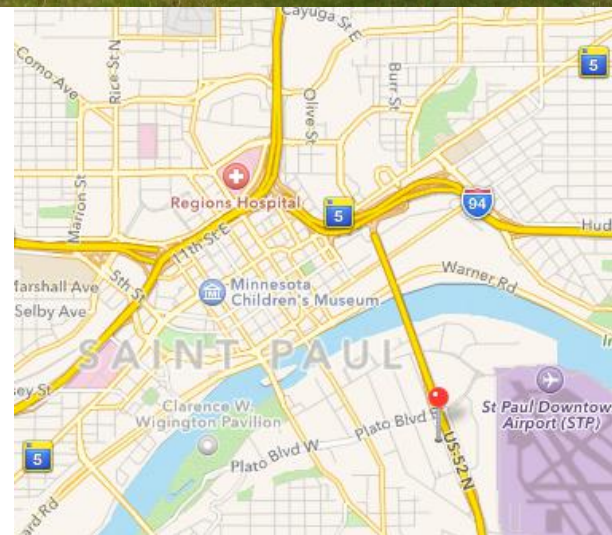
Saint Paul, MN 55107-1628



Facts

273 Lafayette is conveniently located just South of downtown St. Paul along Highway 52. The building features easy access from Hwy 52, large amounts of parking, and a nice professional appearance.

Currently available for lease is 1,150sf of office space, with two private offices, a large open area, furniture in place, and a small enclosed cube, if desired.



Ryan Hoveland
Office: 612-361-4806
Mobile: 612-802-0988
ryan@apexcommercialproperties.com

Diane Signorelli
Office: 612-361-4806
Mobile: 651-399-9728
diane@apexcommercialproperties.com

Apex Commercial Properties, LLC
155 S. Wabasha Street, #115
St. Paul, MN 55107

For Lease ~ Office & Warehouse 273 Lafayette W Frontage Rd.

Saint Paul, MN 55107-1628



Property Details

Building Size

20,476sf

Available Suites

Office - 1,150sf

Original Construction

1981

Construction Type

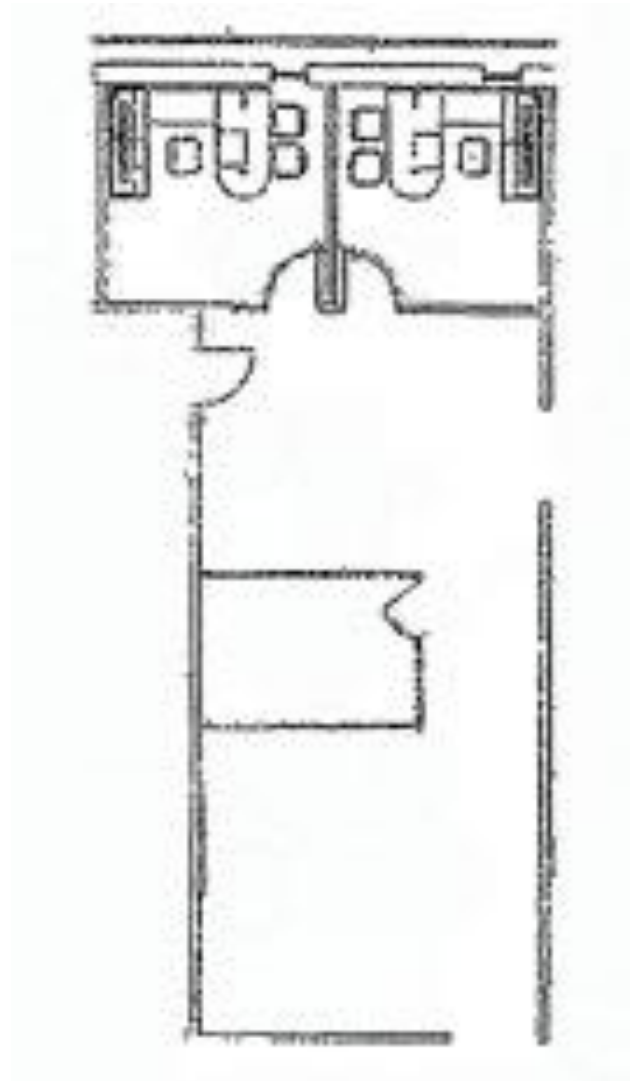
Brick & Block

Parking

66 Stalls

Rental Rates

\$15psf total for office



Information is from sources deemed reliable. However, no warranty or representation is made as to its accuracy or completeness.

Ryan Hoveland
Office: 612-361-4806
Mobile: 612-802-0988
[ryan@apexcommercial
properties.com](mailto:ryan@apexcommercialproperties.com)

Diane Signorelli
Office: 612-361-4806
Mobile: 651-399-9728
[diane@apexcommercial
properties.com](mailto:diane@apexcommercialproperties.com)

Apex Commercial Properties, LLC
155 S. Wabasha Street, #115
St. Paul, MN 55107

For Lease ~ Office & Warehouse 273 Lafayette W Frontage Rd.

Saint Paul, MN 55107-1628



Ryan Hoveland
Office: 612-361-4806
Mobile: 612-802-0988
[ryan@apexcommercial
properties.com](mailto:ryan@apexcommercialproperties.com)

Diane Signorelli
Office: 612-361-4806
Mobile: 651-399-9728
[diane@apexcommercial
properties.com](mailto:diane@apexcommercialproperties.com)

Apex Commercial Properties, LLC
155 S. Wabasha Street, #115
St. Paul, MN 55107