

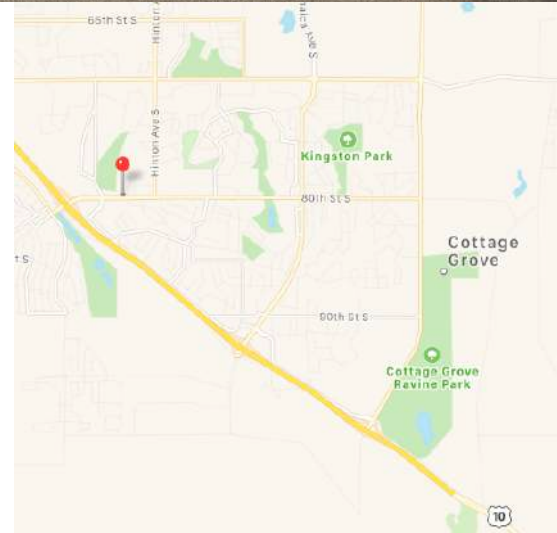
For Lease ~ Dental/Medical Space Colonial Commons

7500 South 80th Street, Cottage Grove, MN 55016



Facts

The Colonial Commons Building is a 10,291sf Medical/Dental office building located along 80th Street just east of Highway 10/61 in Cottage Grove, MN. The available space is a fully built out Periodontal clinic with four operatory rooms, staff lounge, staff office, private Dr.s' office, nicely appointed reception area, an on site lab, and consultation room. Other tenants within the building are Integrity Dental Care and a Health Partners Clinic.



Ryan Hoveland
Office: 612-361-4806
Mobile: 612-802-0988
ryan@apexcommercialproperties.com

Diane Signorelli
Office: 612-361-4806
Mobile: 651-399-9728
diane@apexcommercialproperties.com

Apex Commercial Properties, LLC
155 S. Wabasha Street, #115
St. Paul, MN 55107

For Lease ~ Dental/Medical Space Colonial Commons

7500 South 80th Street, Cottage Grove, MN 55016



Property Details

Building Size

10,291sf

Available Suites

Suite #210 - 1,873 Rentable SF

Year Built

2007

Construction Type

Masonry/Brick Construction

Parking

5.5/1,000 ratio

Rental Rates

\$22.00 NNN per square foot

CAM & Tax 2020

Taxes - \$5.73 per square foot

CAM - \$10.53 per square foot

R/U Factor

97.8%

Comments

- Four operator rooms
- Enclosed interior workspace/lab
- Private consultation room
- Convenient location
- Complementary tenant mix



Information is from sources deemed reliable. However, no warranty or representation is made as to its accuracy or completeness.

Ryan Hoveland
Office: 612-361-4806
Mobile: 612-802-0988
ryan@apexcommercialproperties.com

Diane Signorelli
Office: 612-361-4806
Mobile: 651-399-9728
diane@apexcommercialproperties.com

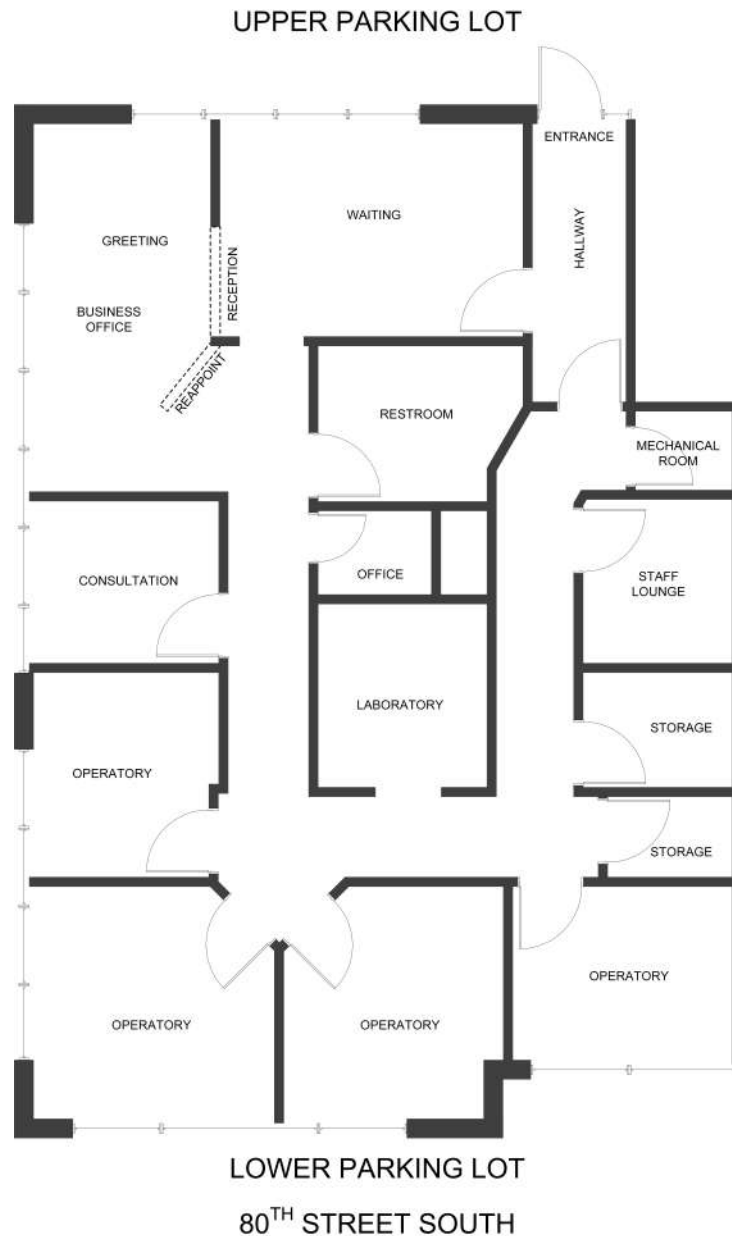
Apex Commercial Properties, LLC
155 S. Wabasha Street, #115
St. Paul, MN 55107

For Lease ~ Dental/Medical Space Colonial Commons

7500 South 80th Street, Cottage Grove, MN 55016



Floor Plans



Ryan Hoveland
Office: 612-361-4806
Mobile: 612-802-0988
ryan@apexcommercialproperties.com

Diane Signorelli
Office: 612-361-4806
Mobile: 651-399-9728
diane@apexcommercialproperties.com

Apex Commercial Properties, LLC
155 S. Wabasha Street, #115
St. Paul, MN 55107

For Lease ~ Dental/Medical Space Colonial Commons

7500 South 80th Street, Cottage Grove, MN 55016



Interior Photos



Ryan Hoveland
Office: 612-361-4806
Mobile: 612-802-0988
ryan@apexcommercialproperties.com

Diane Signorelli
Office: 612-361-4806
Mobile: 651-399-9728
diane@apexcommercialproperties.com

Apex Commercial Properties, LLC
155 S. Wabasha Street, #115
St. Paul, MN 55107



Interior Photos



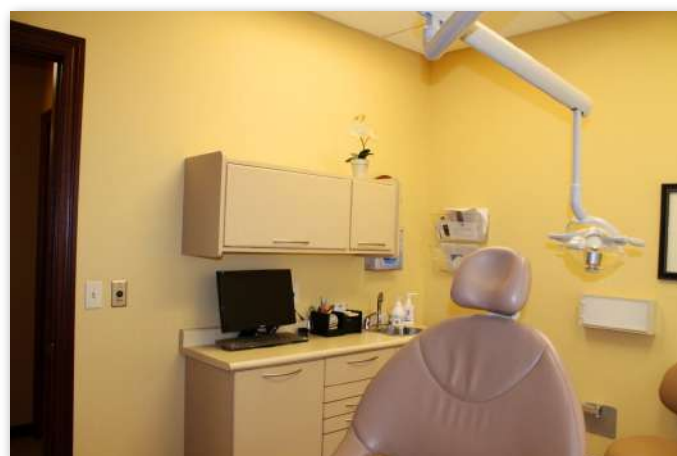
Ryan Hoveland
Office: 612-361-4806
Mobile: 612-802-0988
[ryan@apexcommercial
properties.com](mailto:ryan@apexcommercialproperties.com)

Diane Signorelli
Office: 612-361-4806
Mobile: 651-399-9728
[diane@apexcommercial
properties.com](mailto:diane@apexcommercialproperties.com)

Apex Commercial Properties, LLC
155 S. Wabasha Street, #115
St. Paul, MN 55107



Interior Photos



Ryan Hoveland
Office: 612-361-4806
Mobile: 612-802-0988
ryan@apexcommercialproperties.com

Diane Signorelli
Office: 612-361-4806
Mobile: 651-399-9728
diane@apexcommercialproperties.com

Apex Commercial Properties, LLC
155 S. Wabasha Street, #115
St. Paul, MN 55107