

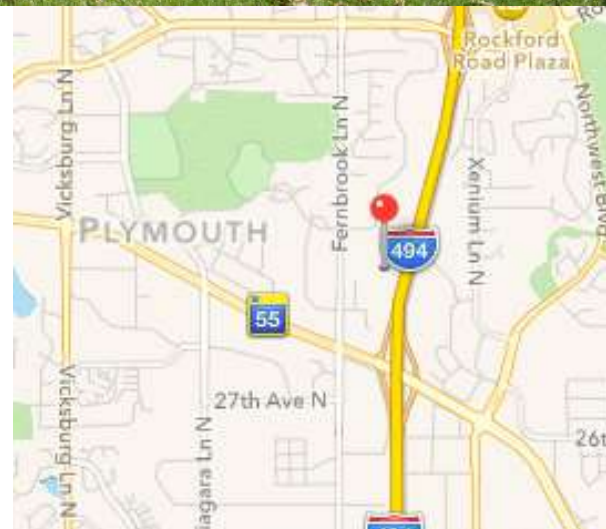
For Sale ~ Class A Office Space Annapolis Office Park

3340 Annapolis Lane N., Plymouth, MN 55447



Facts

Conveniently located just off of Hwy 55 and I-494, this two unit condo features Class A high end finishes, including two traditional conference rooms and an informal conference room with a fireplace, high-speed internet via T1 fiber optic, gorgeous kitchenette with lots of built in features, including gourmet coffee and espresso makers. Televisions are included in the sale, and additional furnishings are negotiable with the sale.



Ryan Hoveland
Office: 612-361-4806
Mobile: 612-802-0988
ryan@apexcommercialproperties.com

Diane Signorelli
Office: 612-361-4806
Mobile: 651-399-9728
diane@apexcommercialproperties.com

Apex Commercial Properties, LLC
155 S. Wabasha Street, #115
St. Paul, MN 55107

For Sale ~ Class A Office Space Annapolis Office Park

3340 Annapolis Lane N., Plymouth, MN 55447



Property Details

Building Size

5,928 square feet

Available Suites

#208 - \$995 a month

#111 - \$750 a month

#110 - \$500 a month

Year Built

2004

Construction Type

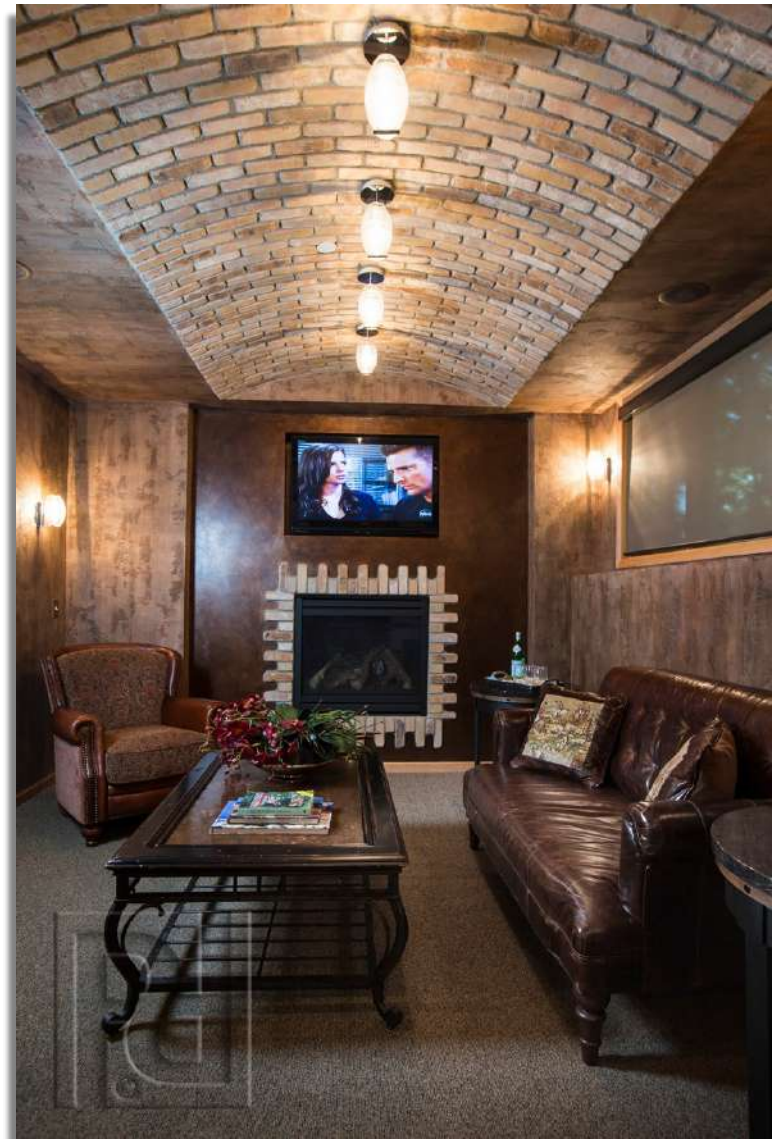
Wood Frame

Parking

Abundant

Comments

- Beautiful Class A Office Park
- Professionally designed and decorated interior, Class A+ finishes
- Convenient access from I-494
- Stunning views of wildlife
- Excellent privacy



Information is from sources deemed reliable. However, no warranty or representation is made as to its accuracy or completeness.

Ryan Hoveland
Office: 612-361-4806
Mobile: 612-802-0988
ryan@apexcommercialproperties.com

Diane Signorelli
Office: 612-361-4806
Mobile: 651-399-9728
diane@apexcommercialproperties.com

Apex Commercial Properties, LLC
155 S. Wabasha Street, #115
St. Paul, MN 55107

For Sale ~ Class A Office Space Annapolis Office Park

3340 Annapolis Lane N., Plymouth, MN 55447



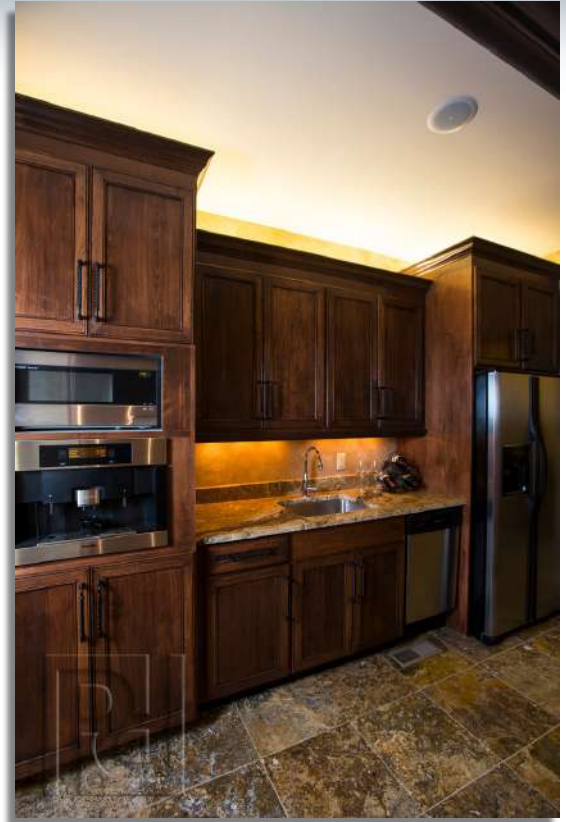
Ryan Hoveland
Office: 612-361-4806
Mobile: 612-802-0988
ryan@apexcommercialproperties.com

Diane Signorelli
Office: 612-361-4806
Mobile: 651-399-9728
diane@apexcommercialproperties.com

Apex Commercial Properties, LLC
155 S. Wabasha Street, #115
St. Paul, MN 55107

For Sale ~ Class A Office Space Annapolis Office Park

3340 Annapolis Lane N., Plymouth, MN 55447



Ryan Hoveland
Office: 612-361-4806
Mobile: 612-802-0988
[ryan@apexcommercial
properties.com](mailto:ryan@apexcommercialproperties.com)

Diane Signorelli
Office: 612-361-4806
Mobile: 651-399-9728
[diane@apexcommercial
properties.com](mailto:diane@apexcommercialproperties.com)

Apex Commercial Properties, LLC
155 S. Wabasha Street, #115
St. Paul, MN 55107

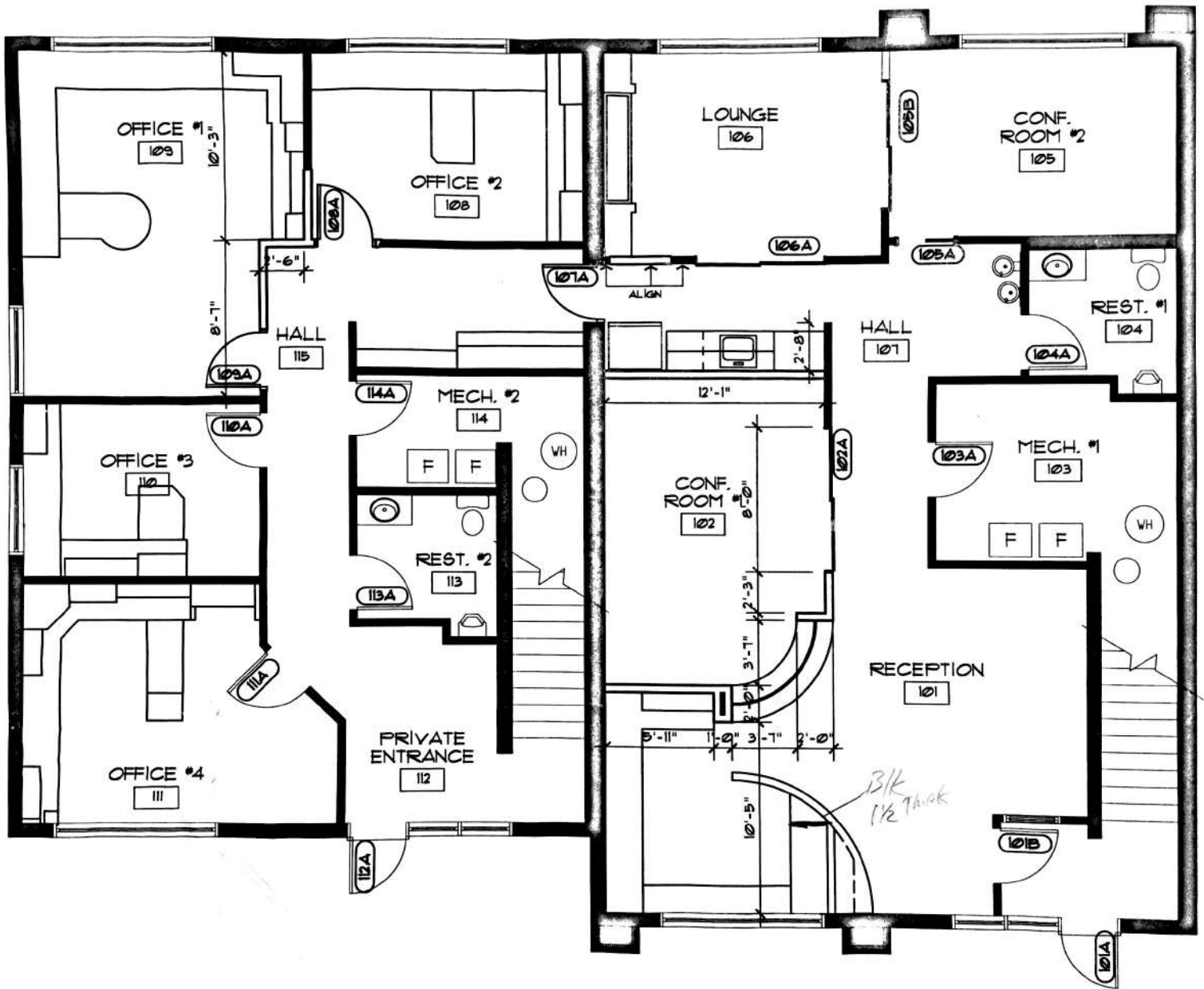
For Sale ~ Class A Office Space

Annapolis Office Park

3340 Annapolis Lane N., Plymouth, MN 55447



First Floor Plans



Ryan Hoveland
Office: 612-361-4806
Mobile: 612-802-0988
ryan@apexcommercialproperties.com

Diane Signorelli
Office: 612-361-4806
Mobile: 651-399-9728
diane@apexcommercialproperties.com

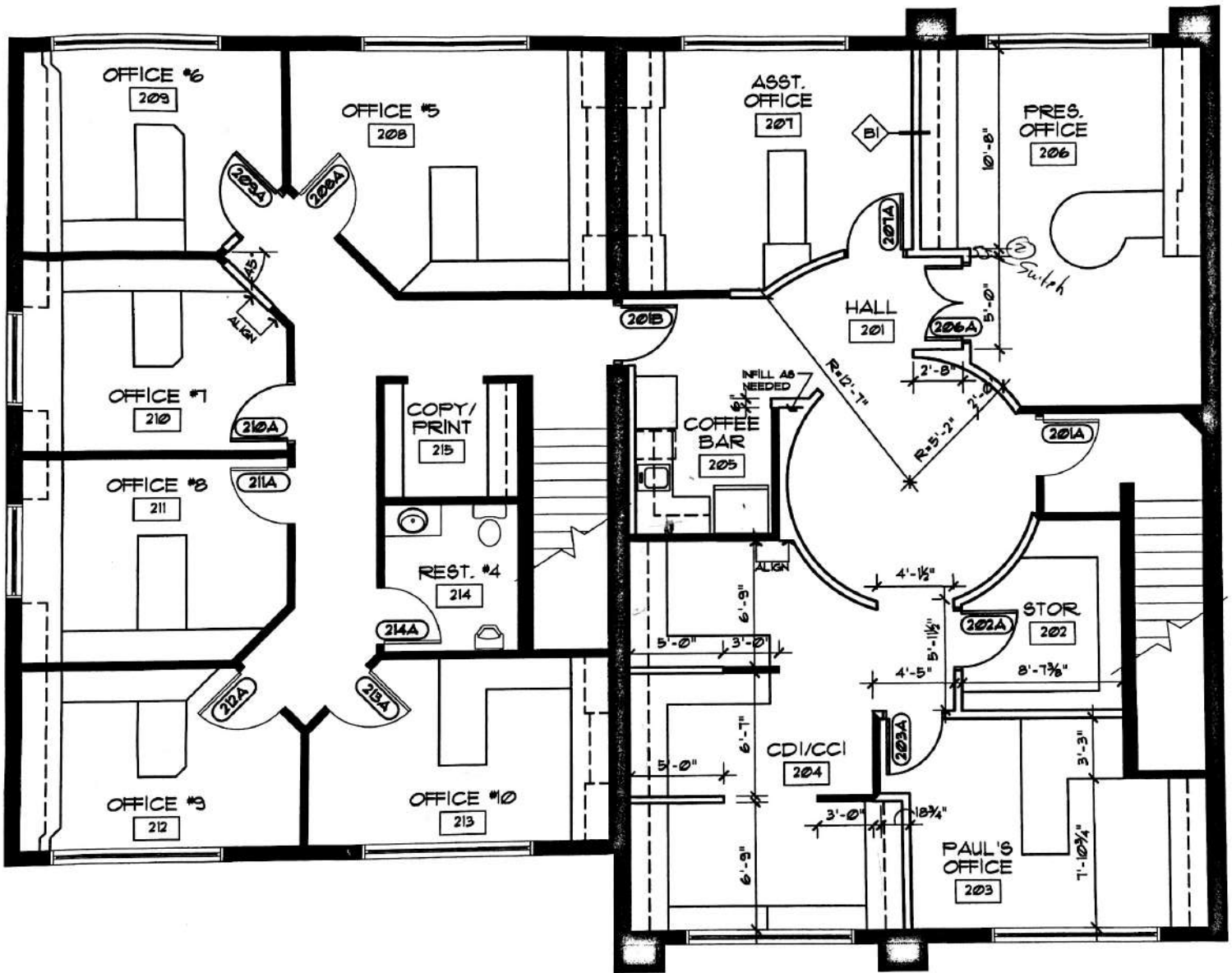
Apex Commercial Properties, LLC
155 S. Wabasha Street, #115
St. Paul, MN 55107

For Sale ~ Class A Office Space Annapolis Office Park

3340 Annapolis Lane N., Plymouth, MN 55447



Second Floor Plans



Ryan Hoveland
Office: 612-361-4806
Mobile: 612-802-0988
ryan@apexcommercialproperties.com

Diane Signorelli
Office: 612-361-4806
Mobile: 651-399-9728
diane@apexcommercialproperties.com

Apex Commercial Properties, LLC
155 S. Wabasha Street, #115
St. Paul, MN 55107