

For Sale ~ Office Condo

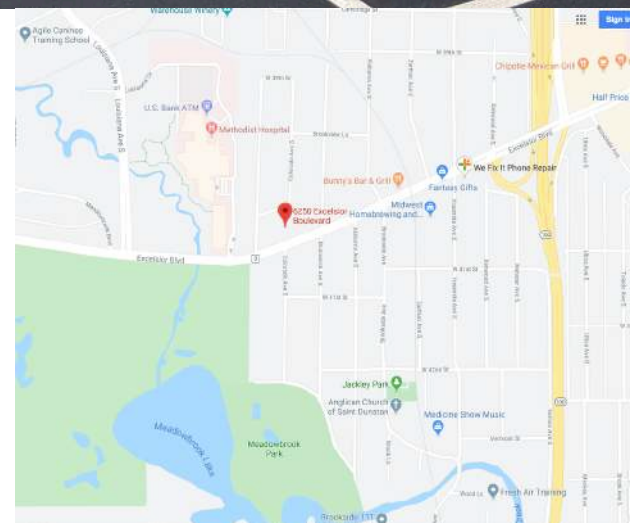
Excelsior Blvd Office Park

6250 Excelsior Blvd, Saint Louis Park, MN 55416



Facts

A rare opportunity to own your own small office in the heart of St. Louis Park! Conveniently located on Excelsior Blvd just off Hwy 100, this property is close to great retail, restaurants, golf courses, Methodist Hospital and more. Suite features four private offices, and open collaborative area. Property is very well maintained, provides a common kitchenette, high-speed internet via T1 fiber optic, abundant parking and monument signage on Excelsior Blvd.



Ryan Hoveland
Office: 612-361-4806
Mobile: 612-802-0988
ryan@apexcommercialproperties.com

Diane Signorelli
Office: 612-361-4806
Mobile: 651-399-9728
diane@apexcommercialproperties.com

Apex Commercial Properties, LLC
155 S. Wabasha Street, #115
St. Paul, MN 55107

For Sale ~ Office Condo

Excelsior Blvd Office Park

6250 Excelsior Blvd, Saint Louis Park, MN 55416



Property Details

Building Size

12,800 square feet

Suite 101

1,200 square feet

Asking Price

\$150,000

Association Dues

\$450.00/month

2019 Taxes

\$3,142.42

Construction Type

Wood frame with brick exterior

Year Built

1984

Parking

Abundant

Comments

- Well located in the heart of St. Louis Park
- Easy access to Hwy 100 and Hwy 169
- Four private offices with sliding glass doors
- Common kitchenette
- Monument signage on Excelsior Blvd



Information is from sources deemed reliable. However, no warranty or representation is made as to its accuracy or completeness.

Ryan Hoveland
Office: 612-361-4806
Mobile: 612-802-0988
ryan@apexcommercialproperties.com

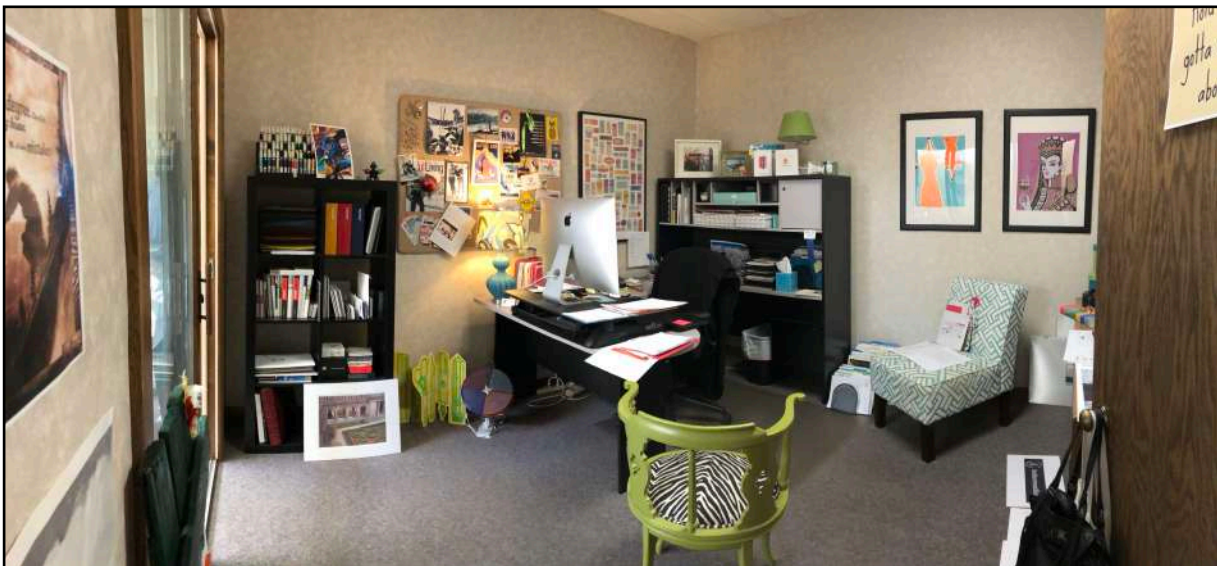
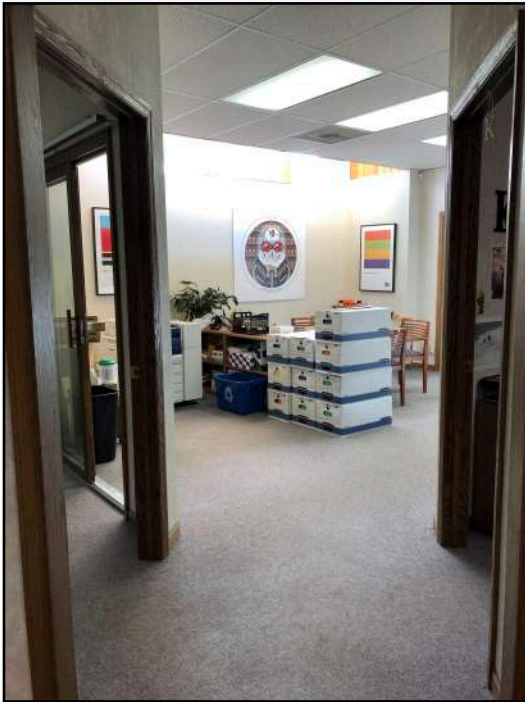
Diane Signorelli
Office: 612-361-4806
Mobile: 651-399-9728
diane@apexcommercialproperties.com

Apex Commercial Properties, LLC
155 S. Wabasha Street, #115
St. Paul, MN 55107

For Sale ~ Office Condo

Excelsior Blvd Office Park

6250 Excelsior Blvd, Saint Louis Park, MN 55416



Ryan Hoveland
Office: 612-361-4806
Mobile: 612-802-0988
ryan@apexcommercialproperties.com

Diane Signorelli
Office: 612-361-4806
Mobile: 651-399-9728
diane@apexcommercialproperties.com

Apex Commercial Properties, LLC
155 S. Wabasha Street, #115
St. Paul, MN 55107

For Sale ~ Office Condo
Excelsior Blvd Office Park
6250 Excelsior Blvd, Saint Louis Park, MN 55416



Ryan Hoveland
Office: 612-361-4806
Mobile: 612-802-0988
ryan@apexcommercialproperties.com

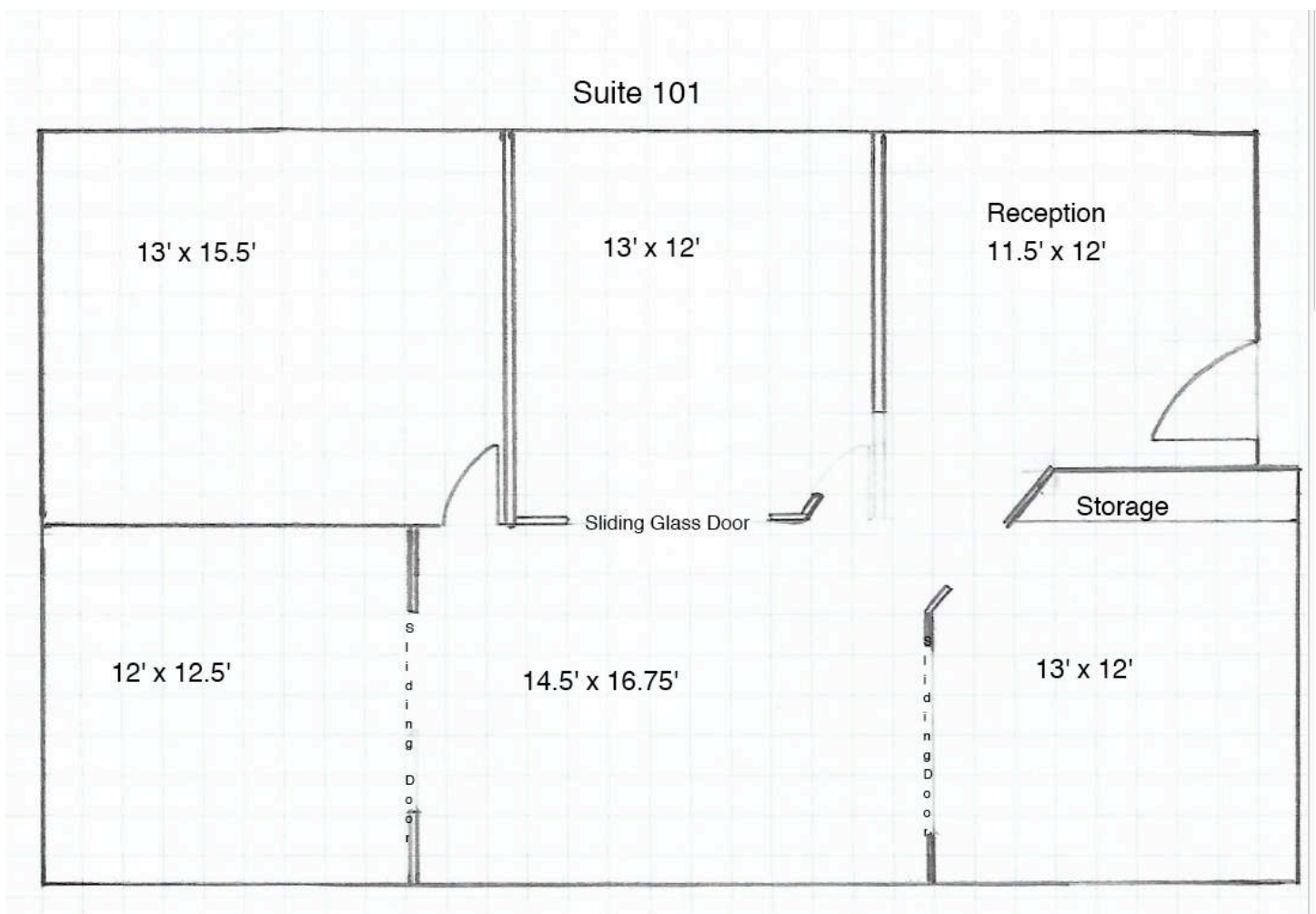
Diane Signorelli
Office: 612-361-4806
Mobile: 651-399-9728
diane@apexcommercialproperties.com

Apex Commercial Properties, LLC
155 S. Wabasha Street, #115
St. Paul, MN 55107

For Sale ~ Office Condo
Excelsior Blvd Office Park
6250 Excelsior Blvd, Saint Louis Park, MN 55416



Floor Plan



Ryan Hoveland
Office: 612-361-4806
Mobile: 612-802-0988
ryan@apexcommercialproperties.com

Diane Signorelli
Office: 612-361-4806
Mobile: 651-399-9728
diane@apexcommercialproperties.com

Apex Commercial Properties, LLC
155 S. Wabasha Street, #115
St. Paul, MN 55107