

For Lease ~ Retail Space

370 Snelling

370 Snelling Avenue S., St. Paul, MN 55105



Facts

Located in the Macalester-Groveland neighborhood of St. Paul, and just blocks north of the prestigious Highland Park neighborhood, 370 Snelling Avenue South offers classic St. Paul street front retail.

Offering 1,405sf of street front retail space, this is great space for any small retail shop, with potential for offices and storage in the back, or a boutique service industry business.



Ryan Hoveland
Office: 612-361-4806
Mobile: 612-802-0988
ryan@apexcommercialproperties.com

Apex Commercial Properties, LLC
155 S. Wabasha Street, #115
St. Paul, MN 55107

For Lease ~ Retail Space

370 Snelling

370 Snelling Avenue S., St. Paul, MN 55105



Property Details

Building Size

3,424sf

Available Suites

Suite #370 - 1,405sf

Original Construction

1924

Parking

On street parking, with limited private stalls behind the property

Rental Rates

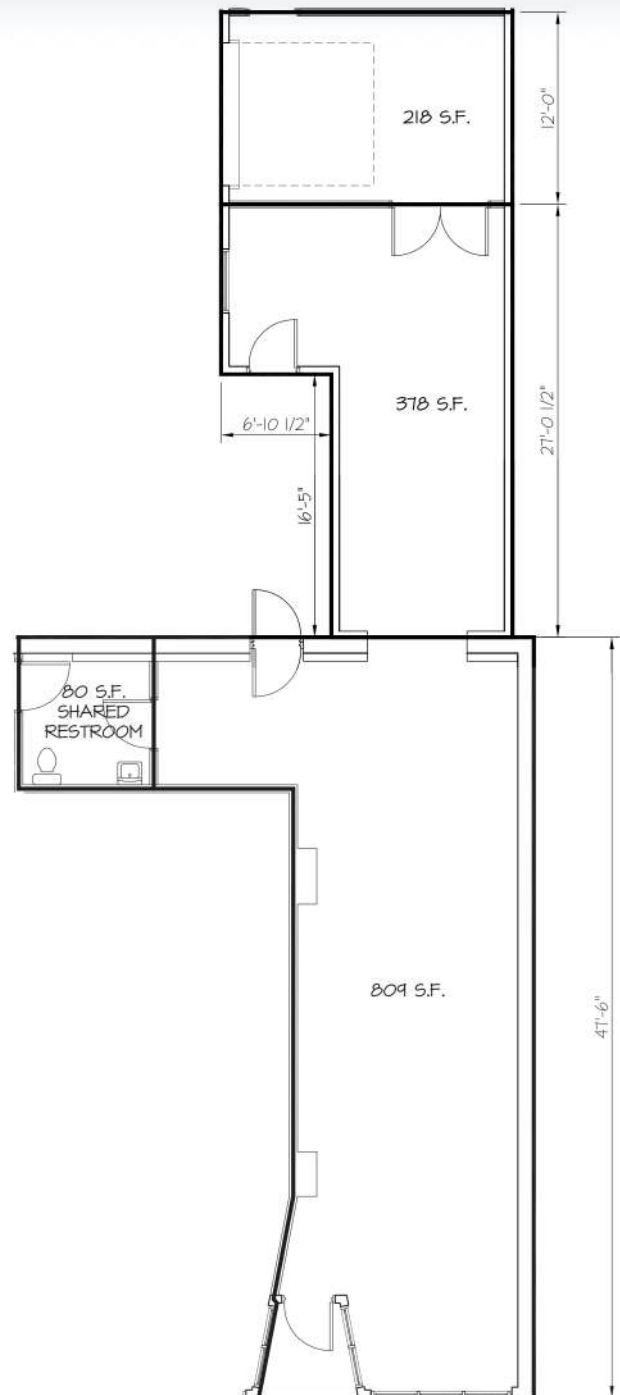
Negotiable, Net

Utilities

Separately metered

Zoning

B2 - Community Business



Information is from sources deemed reliable. However, no warranty or representation is made as to its accuracy or completeness.

Ryan Hoveland

Office: 612-361-4806

Mobile: 612-802-0988

ryan@apexcommercialproperties.com

Apex Commercial Properties, LLC

155 S. Wabasha Street, #115

St. Paul, MN 55107

For Lease ~ Retail Space

370 Snelling

370 Snelling Avenue S., St. Paul, MN 55105



Ryan Hoveland
Office: 612-361-4806
Mobile: 612-802-0988
ryan@apexcommercialproperties.com

Apex Commercial Properties, LLC
155 S. Wabasha Street, #115
St. Paul, MN 55107

For Lease ~ Retail Space

370 Snelling

370 Snelling Avenue S., St. Paul, MN 55105



Ryan Hoveland
Office: 612-361-4806
Mobile: 612-802-0988
ryan@apexcommercialproperties.com

Apex Commercial Properties, LLC
155 S. Wabasha Street, #115
St. Paul, MN 55107