

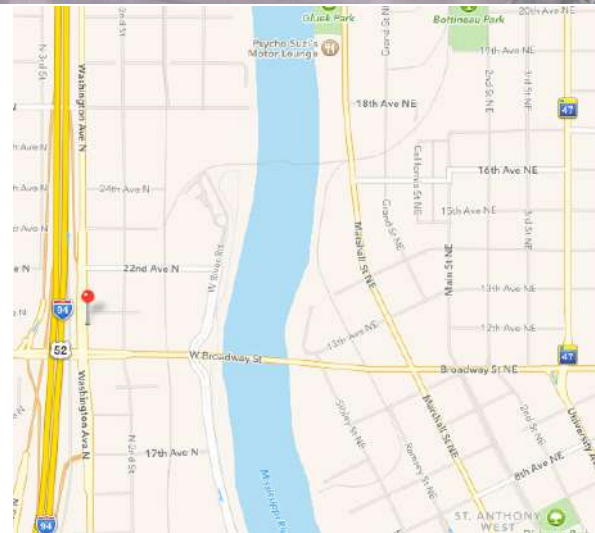
For Lease ~ Office Space 2014 Washington

2014 Washington Ave N., Minneapolis, MN 55411



Facts

Built in 1895, this turn of the Century brick building is home to the Boom Island Brewing Company. Various improvements have been completed to the building, including all new mechanical systems, new electrical, a new roof, as well as a brand new facade which was installed in 2006. The property offers four different suites, three on the ground level and one on the second level.



Ryan Hoveland
Office: 612-361-4806
Mobile: 612-802-0988
ryan@apexcommercialproperties.com

Apex Commercial Properties, LLC
155 S. Wabasha Street, #115
St. Paul, MN 55107

For Lease ~ Office Space 2014 Washington

2014 Washington Ave N., Minneapolis, MN 55411



Property Details

Building Size

11,290sf

Available Suites

Suite #100 -2,800sf

Suite #200 -2,300sf

Suite #250 -2,440sf

Original Construction

1895

Remodel Year

2006

Parking

Gated parking in rear

Rental Rates

\$10 psf NNN

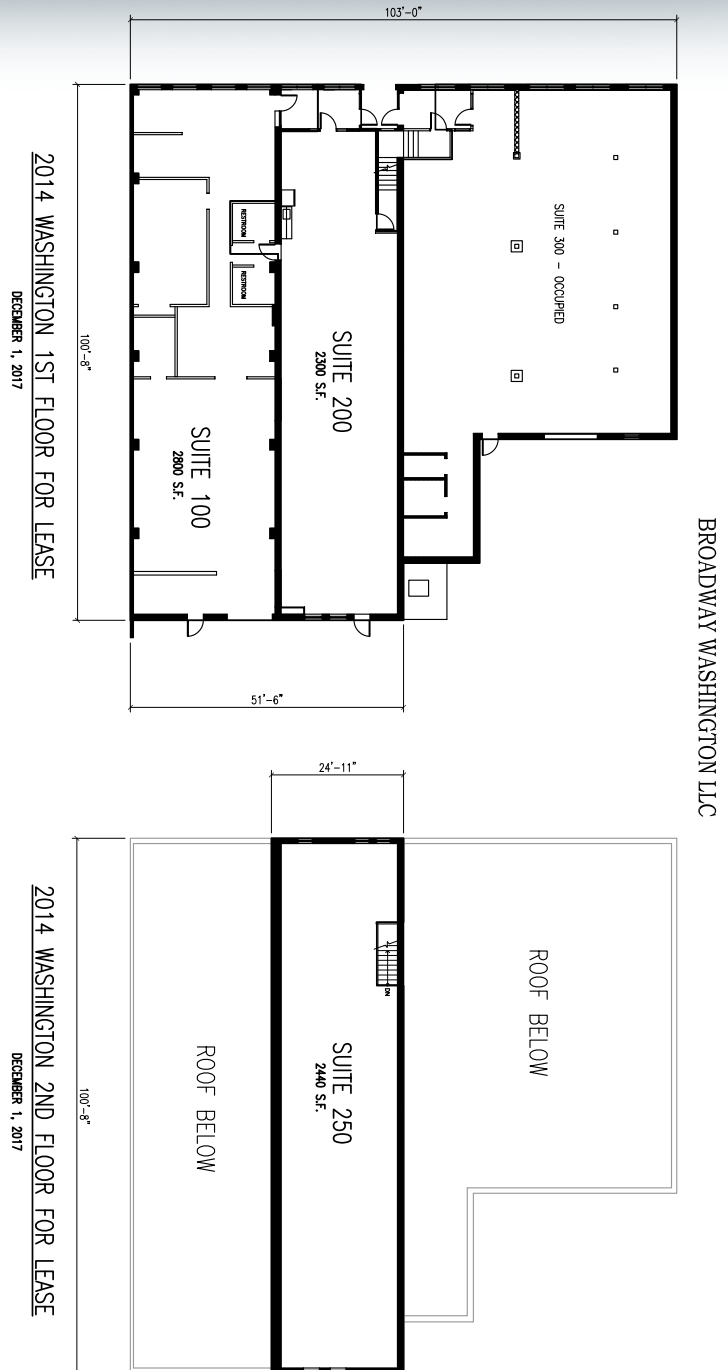
CAM & Tax Estimate

\$3.50 per square foot

Utilities

Estimated at \$1.50 per square foot

Information is from sources deemed reliable. However, no warranty or representation is made as to its accuracy or

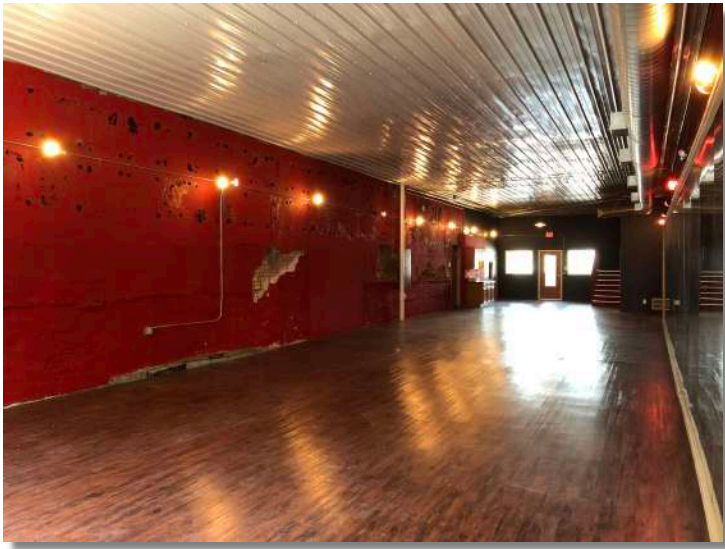


Ryan Hoveland
Office: 612-361-4806
Mobile: 612-802-0988
ryan@apexcommercialproperties.com

Apex Commercial Properties, LLC
155 S. Wabasha Street, #115
St. Paul, MN 55107

For Lease ~ Office Space 2014 Washington

2014 Washington Ave N., Minneapolis, MN 55411

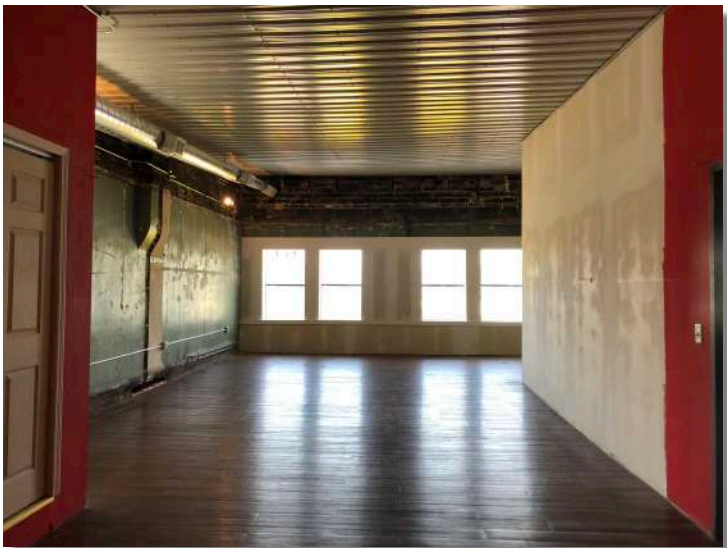
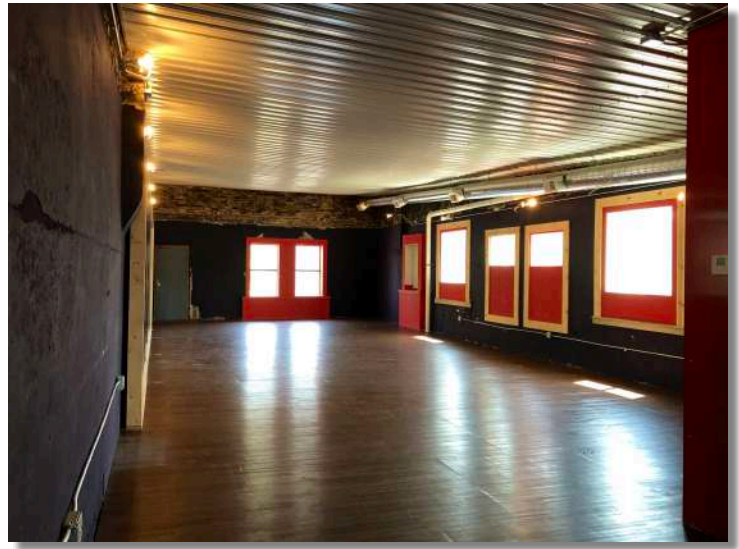
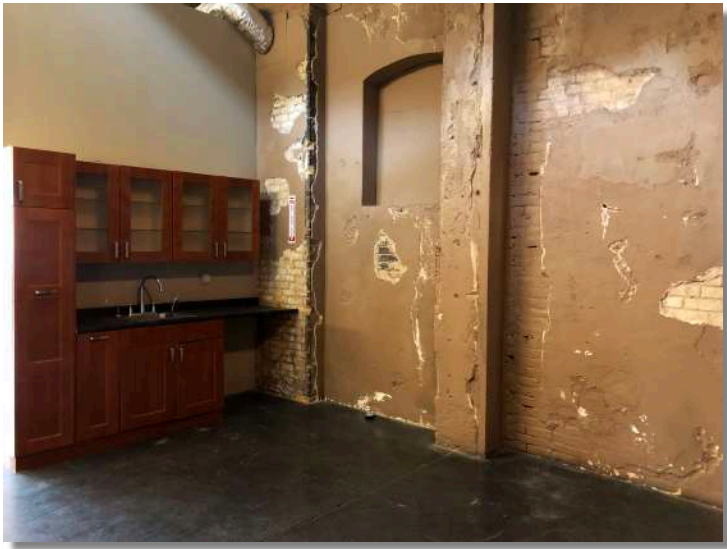


Ryan Hoveland
Office: 612-361-4806
Mobile: 612-802-0988
ryan@apexcommercialproperties.com

Apex Commercial Properties, LLC
155 S. Wabasha Street, #115
St. Paul, MN 55107

For Lease ~ Office Space 2014 Washington

2014 Washington Ave N., Minneapolis, MN 55411



Ryan Hoveland
Office: 612-361-4806
Mobile: 612-802-0988
ryan@apexcommercialproperties.com

Apex Commercial Properties, LLC
155 S. Wabasha Street, #115
St. Paul, MN 55107