

For Lease ~ Office/Retail Space

The Lady Slipper Building

1221 Harmon Place, Minneapolis, MN 55407



Facts

1221-1229 Harmon Place is located in the Harmon Place Historic District in downtown Minneapolis. It is one of several buildings in the district related to the automobile sales industry in the area from the 1920s through the 1950s. Original 1915 construction drawings refer to it as "Store Building for Hattie L. Knoblauch." Carved, limestone medallions at the storefront corners have a lady-slipper and the letter "K" intertwined, probably a reference to the original owner.



Ryan Hoveland
Office: 612-361-4806
Mobile: 612-802-0988
ryan@apexcommercialproperties.com

Apex Commercial Properties, LLC
155 S. Wabasha Street, #115
St. Paul, MN 55107

For Lease ~ Office/Retail Space

The Lady Slipper Building

1221 Harmon Place, Minneapolis, MN 55407



Property Details

Building Size

24,410sf

Available Suites

Suite #1221 - 7,765sf

Original Construction

1915

Remodel Year

2005

Construction Type

Brick & Glass

Rental Rates

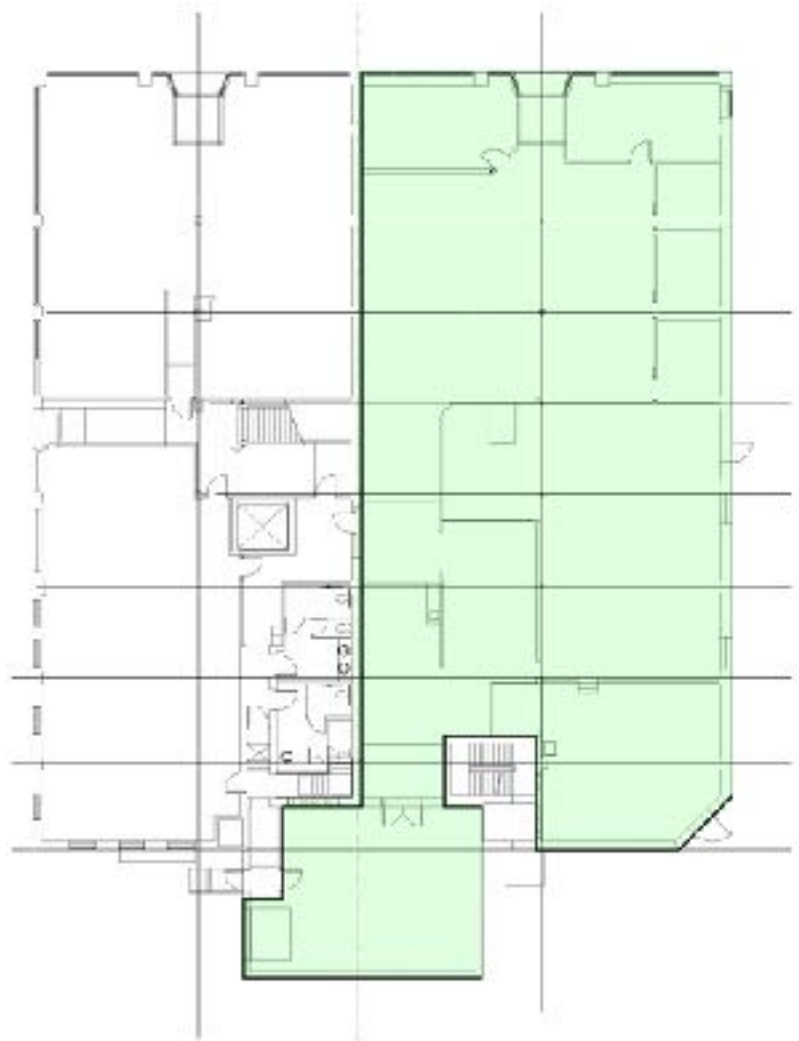
\$10.00 NNN per square foot

CAM & Tax Estimate

\$7.50 per square foot

Notes

Suite #1221 features a full testing kitchen previously used by Boom Chicka Pop in their creation and testing of different food products.



Information is from sources deemed reliable. However, no warranty or representation is made as to its accuracy or completeness.

Ryan Hoveland

Office: 612-361-4806

Mobile: 612-802-0988

ryan@apexcommercialproperties.com

Apex Commercial Properties, LLC

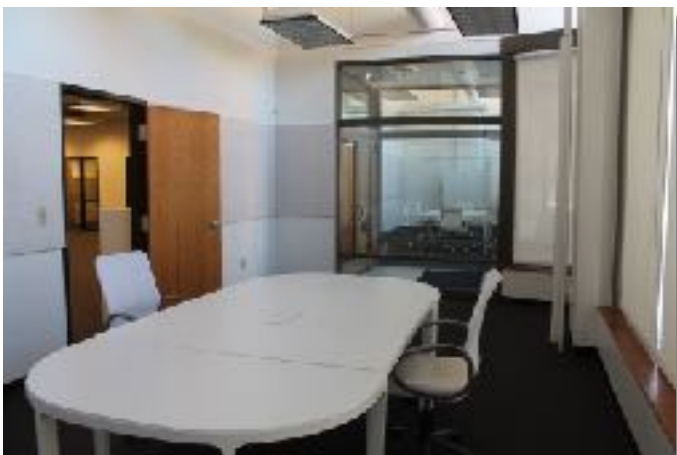
155 S. Wabasha Street, #115

St. Paul, MN 55107

For Lease ~ Office

The Ladyslipper Building

1221 Harmon Place, Minneapolis, MN 55407



Ryan Hoveland
Office: 612-361-4806
Mobile: 612-802-0988
ryan@apexcommercialproperties.com

Apex Commercial Properties, LLC
155 S. Wabasha Street, #115
St. Paul, MN 55107